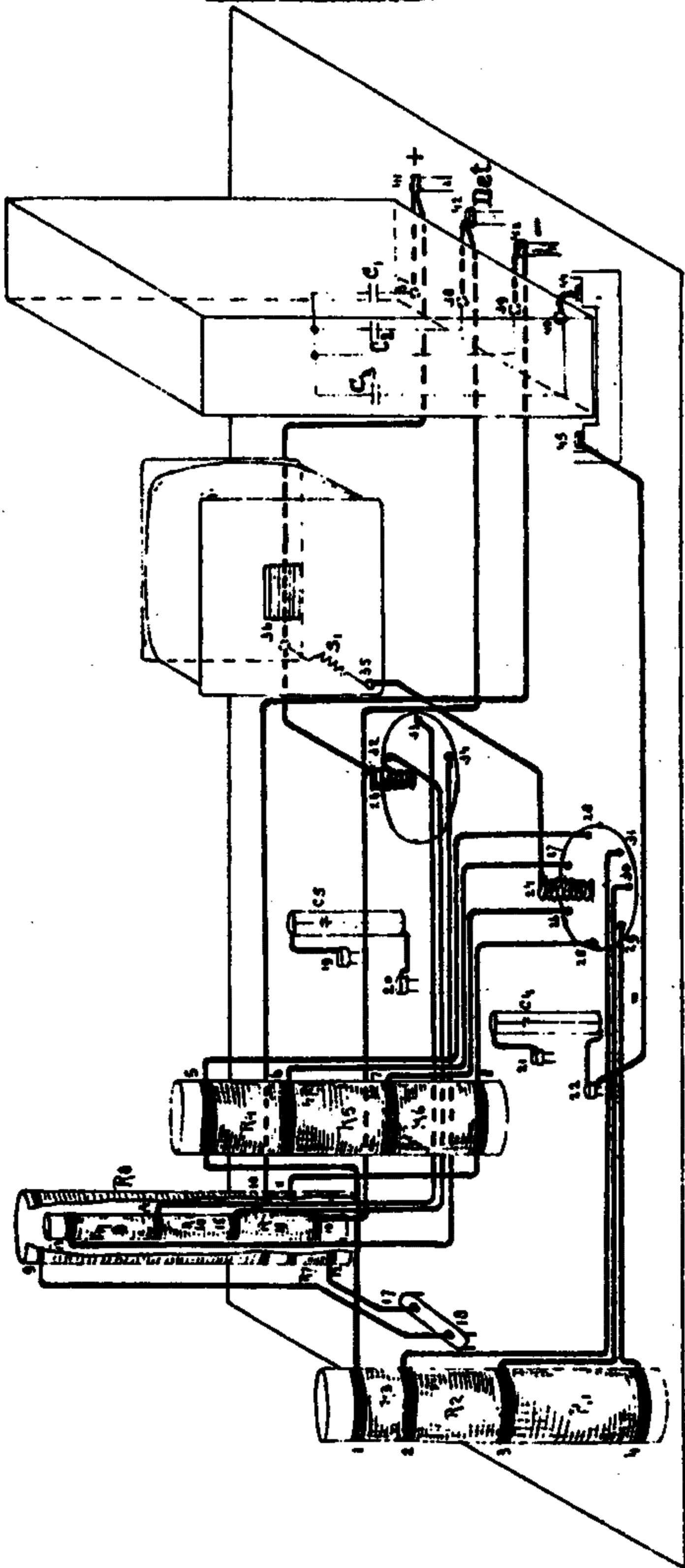


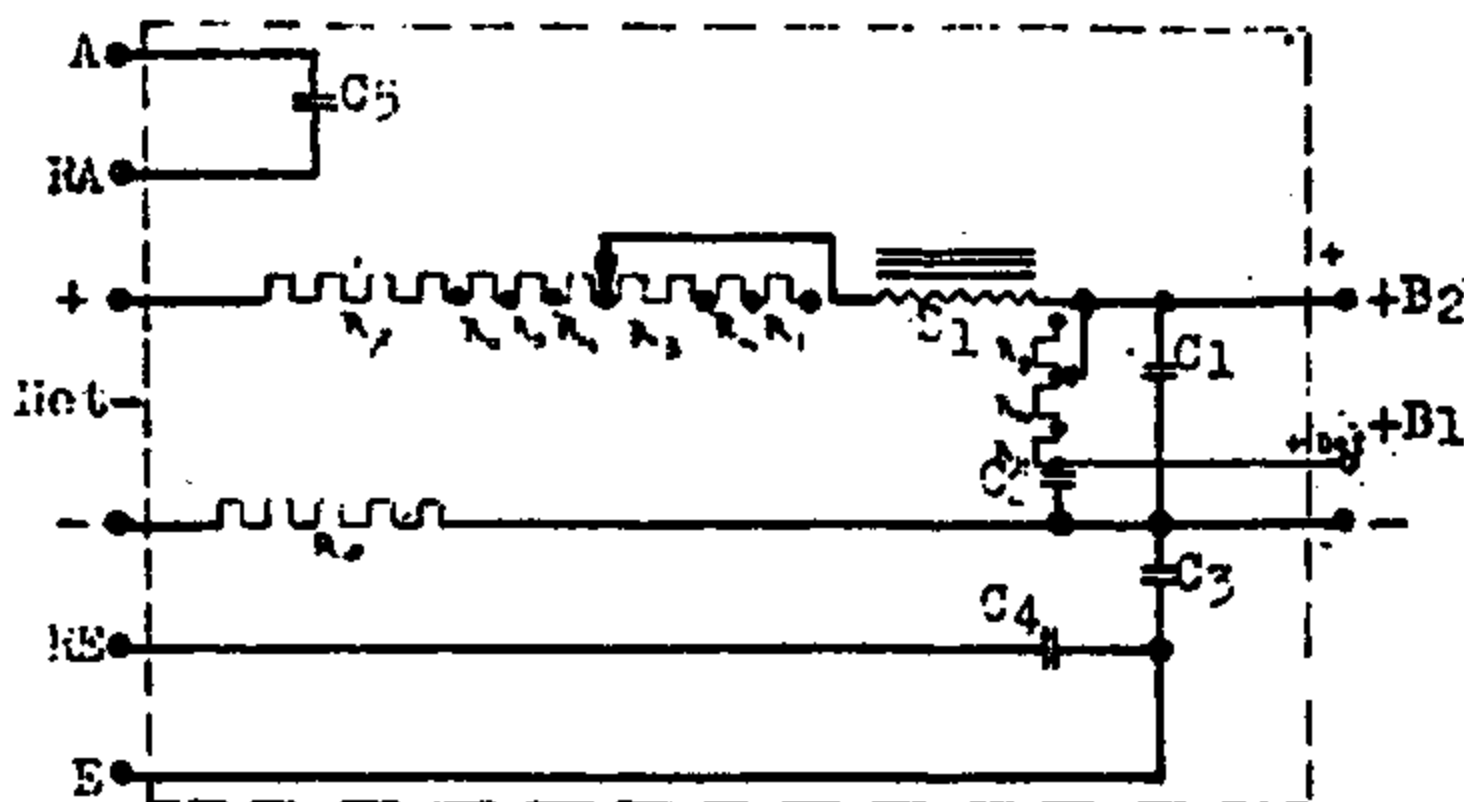
MONTAGESCHEMA.



VERBINDINGEN.

No. 1	:	12-17
" 2	:	9-18
" 3	:	25-3-11
" 4	:	43-10
" 5	:	26-7
" 6	:	27-6
" 7	:	28-5
" 8	:	29-4
" 9	:	30-3
" 10	:	31-2
" 11	:	41-36
" 12	:	42-16
" 13	:	32-15
" 14	:	34-13
" 15	:	22-45
" 16	:	35-24; 36-23.
" 17	:	1-5
" 18	:	41-37
" 19	:	42-38
" 20	:	43-39; 44-40
" 21	:	14-33.

PRINCIPESCHEMA.



SLOTTEN	BEREKENINGKAART	WERTSTANDEN		BEREKENINGKAART
		130-160V.	200-250V.	
S1 = 5000 w.	A 15009 130-160V.	R1 = 8000Ω	18500 Ω	130/160VW10107 200/250VW10111 130/160VW10108 200/250VW10112 130/160VW10109 200/250VW10113 W 10162
S1 = 11500 w.	A 15011 200-250V.	R2 = 5000 "	12500 "	
		R3 = 3500 "	3500 "	
		R4 = 2500 "	5500 "	
		R5 = 1500 "	3500 "	
		R6 = 1000 "	2500 "	
		R7 = " "	500 "	
		R8 = 1000 "	2500 "	
		R9 = 20000 Ω		
		R10 = 20000 "		
		R11 = 20000 "		
CONDENSATOREN	BEREKENINGKAART			
C1 = 4x2 + 1x1 μF	C 10028			
C2 = 1x2 + 1x1 "	C 10029			
C3 = 1 x 1 "	C 10032			
C4 = 5500 μF	C 10018 H			
C5 = 5500 "				

BYBEN. S. 10077 : Cond. door S1-5; 10001.

SAMENSTELLINGSTEELK. P. 847.

AANKOMST VAN DE

